

GPS/GSM Antenna

MODEL: GMA-200



1. GSM Antenna

General Description

Model No	P/N
GMA-200	

Below is a table summarizing the antenna design specification.

1.1 Electrical Properties

Parameter	Description
Frequency Band	850/900/1800/1900/2170Hz
Nominal impedance	50ohm
Polarization	Vertical
Electrical Wave	1/4 λ Dipole
V.S.W.R	2.0 : 1
Antenna Average Gain	0dBi
Note:Gain includes the cable loss	

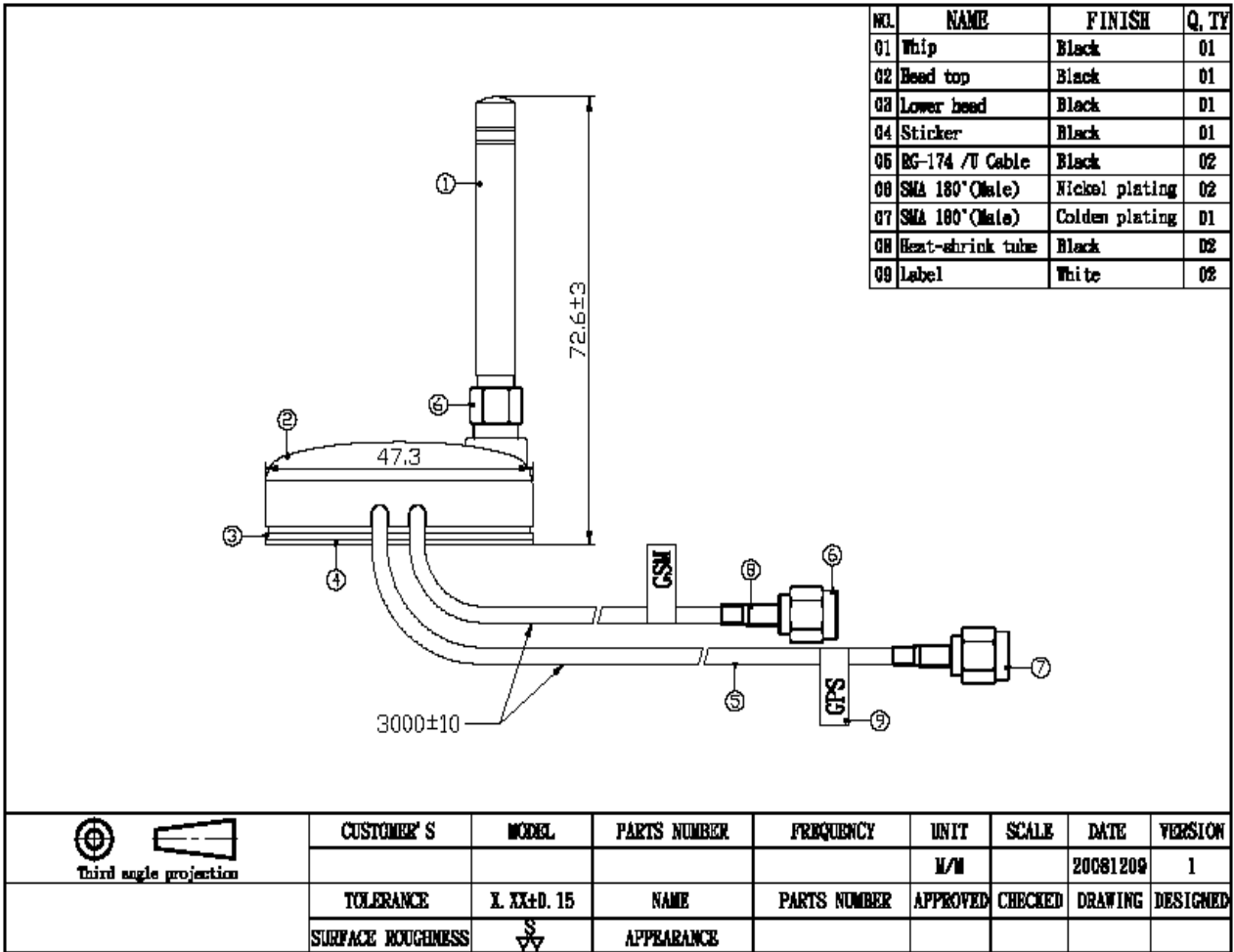
1.2 Mechanical Properties

Parameter	Description
Antenna Type	External Antenna
Antenna Cover	TPEE 630
Touch Type	Magnet Type
Connector Type	SMA 180° (Male)
Antenna Dimensions	47.3mm x 72.6mm
Cable	RG174 – 3M or 5M
Antenna Color	Black
Operating Temperature Range	-20°C~+55°C
Storage Temperature Range	-30°C~+55°C

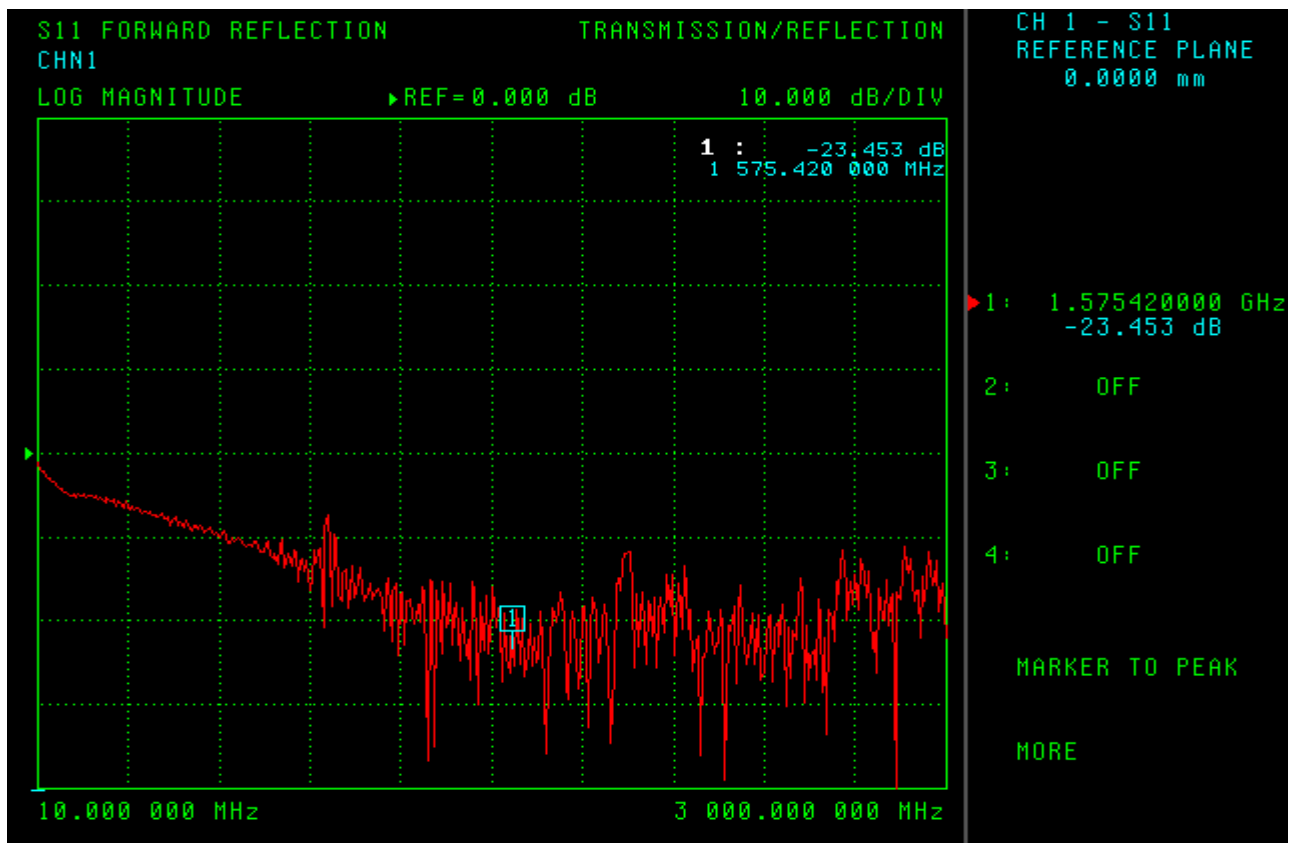
2. GPS Antenna

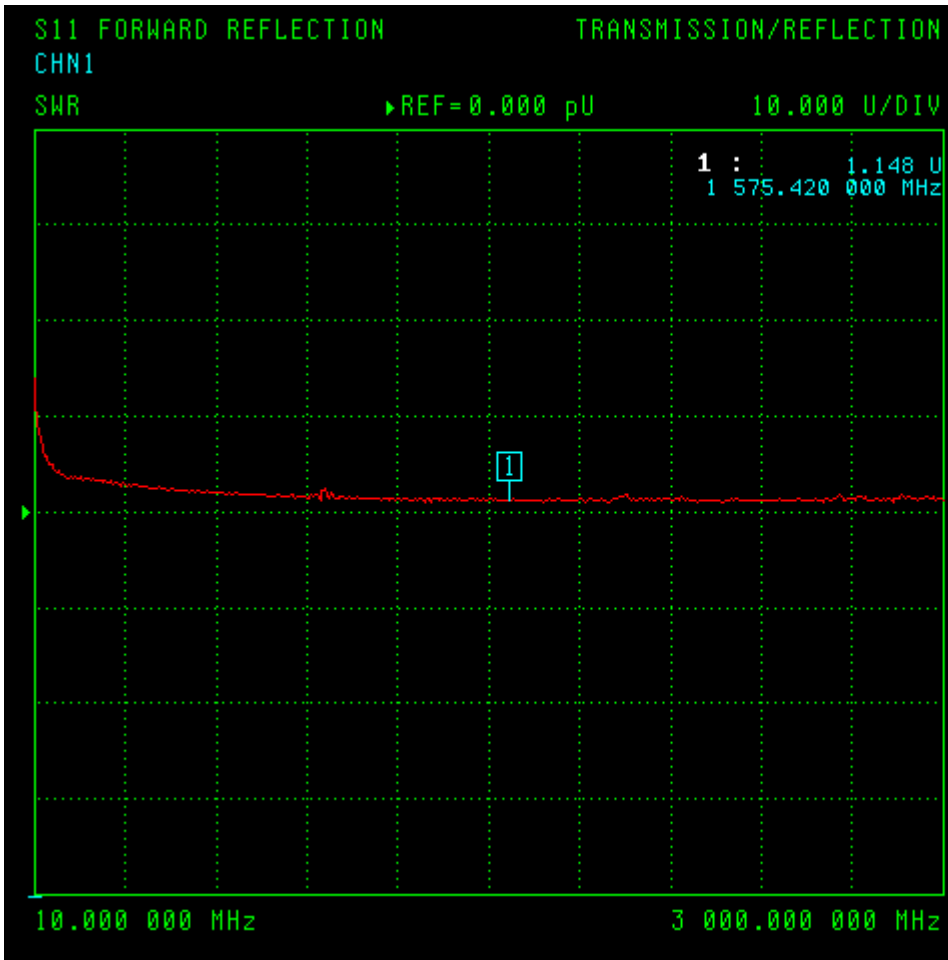
Electrical Specifications	
Input voltage	2.3~5.5V
Current	2.5V : 6.6mA Typical
	3V : 8.6 mA Typical
	4V : 12.6 mA a Typical
	5V : 16.6 mA Typical
Antenna	
Operating Frequency	1575.42±1.023 MHz
Gain at 10°elevation	-1 dBic Typ
Gain at Zenith	5.0 dBic Typ
Bandwidth	10MHz min. @S11 ≤ 10dB
Polarization	R.H.C.P
Axial Ratio	3.0dB Typ
LNA	
Operating Frequency	1575.42 ± 1.023MHz
Gain	28dB Typ
Noise Figure	1.5 dB Typ
Filter	20 dB 25dB min @fo +/-50MHz 30 dB 35dB min @fo +/-100MHz *fo=1575.42MHz
Output Impedance	50ohm
VSWR	2.0 max

3. Appearance



4. Frequency





CH 1 - S11
 REFERENCE PLANE
 0.0000 mm

1: 1.575420000 GHz
 1.148 U

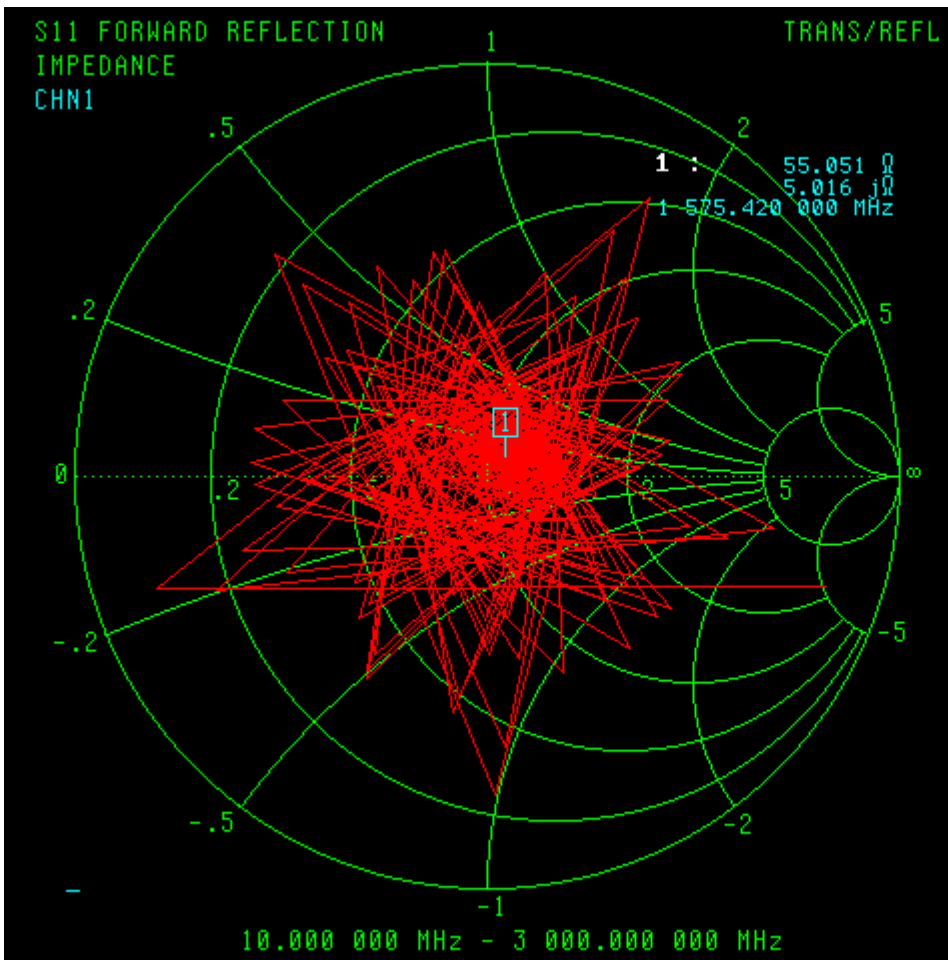
2: OFF

3: OFF

4: OFF

MARKER TO PEAK

MORE



CH 1 - S11
 REFERENCE PLANE
 0.0000 mm

1: 1.575420000 GHz
 55.051 Ω
 5.016 $j\Omega$

2: OFF

3: OFF

4: OFF

MARKER TO PEAK

MORE

